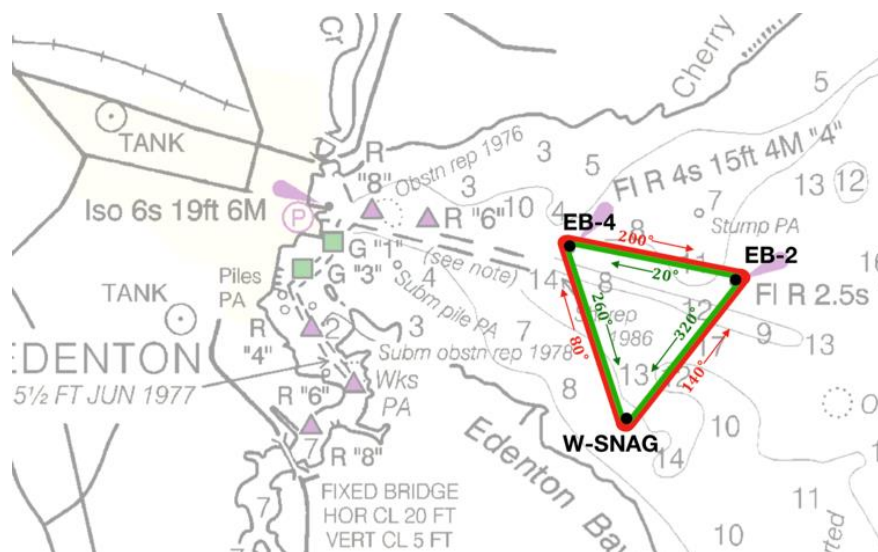


**Names: Gil Burroughs** Start/finish line is to be downwind of EB-4..The committee boat and a pin will mark the start and finish line. In these races you must cross the finish line in the **opposite direction that you started**. **The finish will NOT be at EB-4 within 3 boat-lengths** as in the past. The start and finish lines define the start and finish of the race course.

WIND	Course #	Courses					
350-50	1	EB-4(P)	W-SNAG(P)	EB-2(P)	EB-4(S)		
	1A	EB-4(P)	W-SNAG(P)	EB-2(P)	EB-4(P)	EB-2(P)	EB-4(S)
50-110	2	EB-4(S)	EB-2(S)	W-SNAG(S)	EB-4(S)		
	2A	EB-4(S)	EB-2(S)	W-SNAG(S)	EB-4(S)	W-SNAG(S)	EB-4(S)
110-170	3	EB-4(S)	W-SNAG(P)	EB-2(P)	EB-4(S)		
	3A	EB-4(S)	W-SNAG(P)	EB-2(P)	W-SNAG(P)	EB-2(P)	EB-4(S)
170-200	4	EB-4(S)	EB-2(S)	W-SNAG(S)	EB-4(S)		
	4A	EB-4(S)	EB-2(S)	EB-4(S)	EB-2(S)	W-SNAG(S)	EB-4(S)
200-230	5	EB-4(P)	EB-2(S)	W-SNAG(S)	EB-4(S)		
	5A	EB-4(P)	EB-2(S)	EB-4(S)	EB-2(S)	W-SNAG(S)	EB-4(S)
230-260	6	EB-4(S)	W-SNAG(P)	EB-2(P)	EB-4(S)		
	6A	EB-4(S)	W-SNAG(P)	EB-4(P)	W-SNAG(P)	EB-2(P)	EB-4(S)
260-290	7	EB-4(P)	W-SNAG(P)	EB-2(P)	EB-4(S)		
	7A	EB-4(P)	W-SNAG(P)	EB-4(P)	W-SNAG(P)	EB-2(P)	EB-4(S)
290-350	8	EB-4(P)	EB-2(S)	W-SNAG(S)	EB-4(S)		
	8A	EB-4(P)	EB-2(S)	W-SNAG(S)	EB-2(S)	W-SNAG(S)	EB-4(S)



### Name: ASSA Clockwise Triangular:

This is a general set of courses based on an isosceles triangle with the starting and finishing line **in the near of EB-2**. At the pleasure of the RC, the line may be the Committee boat and a pin or the committee boat and EB-2.

Winds 150M-245M are acceptable. Head to the windward mark, Gybe mark is 45 Deg greater than initial bearing, [add 135 Deg to get new heading] and finish line is 90 deg a beam from the Gybe mark. Total distance, 2.3mi to 3.5mi dependent on length of first leg. A **representative** course is given below.



This course allows for a variety of wind directions, is triangular and familiar to ASSA and EYC racers, and ease of setup by the race committee.

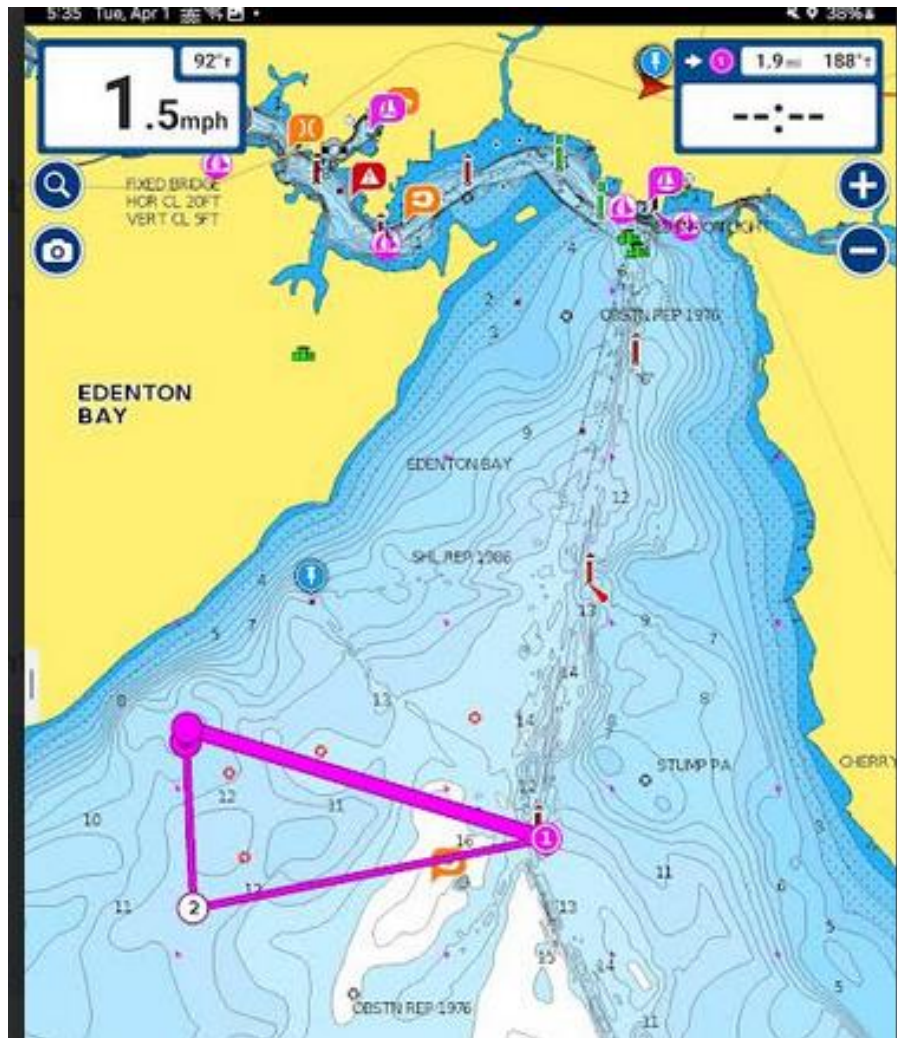
The race committee will head to windward for 1 to 1.5 miles and drop the first mark, add 135 deg to the previous bearing and travel until EB-2 is perpendicular midship of the committee boat and drop the 2<sup>nd</sup> mark.

In this example Start line → #1 245M; #1 → #2; 25M; #2 → finish 106 deg.

### Name: ASSA Triangular Easterly:

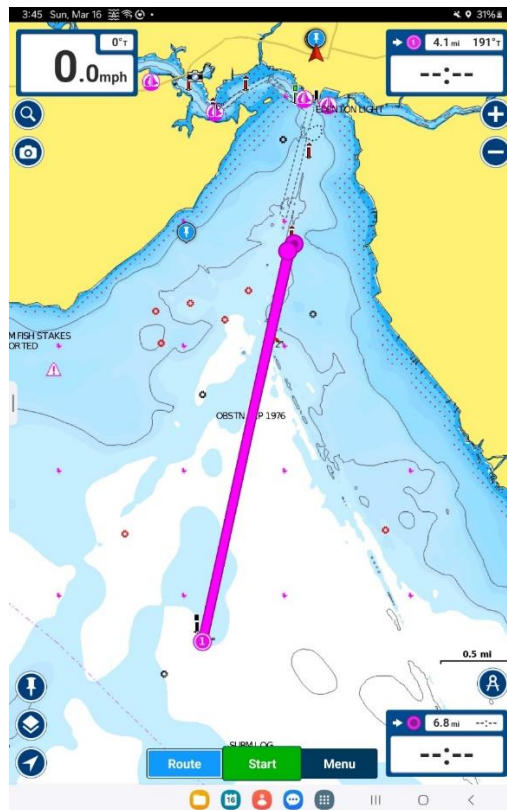
This represents a general set of courses based on an isosceles triangle with the starting and finishing line **in the near of Johns Island**.

Winds 95M-130M are acceptable. Head to the windward mark Easterly from Johns Island, Gybe mark is 135 Deg greater than initial bearing, [add 135 Deg to get new heading] and finish line is 90 deg abeam from the Gybe mark. Length approximately 2.5 miles, a relatively short course.



## Name: Down and Back

**Start**, Start and finish line will be between EB-4 and EB-2, placed at the discretion of the RC. South, head to “CR” [to port] and back to EB-2/EB-4 finish line. Approximate **total distance**, 5.5 mi [8.8 km] Approx. bearing EB-2 → CR, 193T [~203M]. Winds **185M-215M** [175T - 205T]



## Name: Chowan River Mark Triangle

**Start**, near of EB-4, “CR” to starboard, Snag to starboard, back to EB-4 finish line.

Approximate **total distance**, 5.9 mi [9.5 km] Approx. bearing EB-2 → CR, 193T [~203M].

Winds **185M-215M** [175T - 205T]

